



Education & Skills  
Funding Agency



# ESF & Government- Funded Training & Support

# WELCOME

**W**e're often asked what training is available locally and it's difficult to answer because there's so much. Greater Lincolnshire's universities, further education colleges, independent training providers, community based organisation and the voluntary sector offer a large range of learning opportunities and support for local people and local employers.

Much of what they provide is fully-funded by central government and the most common funding streams and initiatives are described over the next few pages.

New training facilities are being built right across Greater Lincolnshire as a result of schemes such as Lincolnshire's Institute of Technology, Town Deals and the LEP's Single Local Growth Fund and the training offer is continuing to grow, particularly to reflect the needs of important industries and local employers.

We're also asked regularly if there's any funding for training.

The answer is there's quite a lot, but it's not usually given directly to employers to train their staff or to members of the public to buy their own training; instead government funding for training tends to flow through the organisations that deliver it.

Our training and education institutions are experts at juggling these different schemes so that the people who want the training don't need to.

This booklet provides details of the locally-based colleges and training providers who are delivering a number of different schemes across Greater Lincolnshire so that organisations referring into them have a better sense of who does what.

It's not an exhaustive list, however the contact section has been extended to include training organisations that do not have a profile page.

We hope the information is useful.

*The Greater Lincolnshire LEP Team.*

# CONTENTS

Welcome	<a href="#">Page 2</a>
<b>ESF and Government Funded Schemes</b>	
Adult Education Budget	<a href="#">Page 6</a>
Apprenticeship	<a href="#">Page 7</a>
Building Better Opportunities (ESF)	<a href="#">Page 8</a>
Employment and Skills Grant (ESF)	<a href="#">Page 9</a>
Kickstart	<a href="#">Page 10</a>
National Careers Service	<a href="#">Page 11</a>
What Is Careers Net (ESF)	<a href="#">Page 12</a>
Restart	<a href="#">Page 13</a>
Sector Based Work Academy	<a href="#">Page 14</a>
Skills Support for the Unemployed (ESF)	<a href="#">Page 15</a>
Skills Support for the Workforce (ESF)	<a href="#">Page 16</a>
Traineeship	<a href="#">Page 17</a>
<b>Colleges and Training Providers</b>	
Abbey Access Training	<a href="#">Page 21</a>
Boston College	<a href="#">Page 22</a>
Community Learning In Partnership (CLIP)	<a href="#">Page 23</a>
First College	<a href="#">Page 24</a>
Grantham College	<a href="#">Page 25</a>
Grimsby Institute And University Centre	<a href="#">Page 26</a>
HCUK Training (ESF)	<a href="#">Page 27</a>
LAGAT	<a href="#">Page 28</a>
Lincoln College	<a href="#">Page 29</a>
Lincolnshire County Council	<a href="#">Page 30</a>
North Lindsey College	<a href="#">Page 31</a>
Riseholme College	<a href="#">Page 32</a>
Stamford College	<a href="#">Page 33</a>
Steadfast Training	<a href="#">Page 34</a>
Colleges and Training Providers	<a href="#">Page 36</a>

# SUCCESS STORIES

“After wanting to move into graduate recruitment we initially spoke with George Bell, Employer Engagement Manager at Boston College.

“We knew we wanted to employ an intern who was from the local area and who would be keen to build a career within our company.

“George put us in contact with the relevant course area. We attended a lesson and presented to the learners what we were looking for in terms of our intern.

“This was then followed by a Q&A session for those who wanted to find out more, which led to six learners showing an interest in applying for the role.

“Those six learners then went through the standard Albert Bartlett application process, which includes submitting a CV and attending an interview with myself and the General Manager.

“All six candidates were of an exceptionally high standard and had an advanced knowledge of business thanks to the course they were studying – it was really refreshing to see their confidence.

“It was extremely difficult to choose just one learner for the internship – we actually contacted the learner who came a close second regarding another role.

“The internship itself was a year-long contract, which finished in January 2021. The learner who was recruited has now been offered a full-time position within the company.

“We cannot speak highly enough of Boston College. The recruitment process from start to finish was smooth with no issues, communication was amazing and the level of learners was very high.

“We are really keen to work with the College again to recruit any future interns and we would definitely recommend Boston College to other companies looking to move into graduate recruitment.”

**Lee Winter, HR and HSE Manager, Albert Bartlett**

Kelly Moffat started a Level 3 HR Support Apprenticeship in 2019 at Lincolnshire County Council.

In her own words Kelly described her apprenticeship experience as “very interesting and exciting”.

“I’ve been involved in a huge variety of work and have loved being able to get stuck into projects.

“I have really enjoyed supporting the apprenticeship project and speaking to colleagues about their development options.

“I study a Master’s Degree part time in occupational psychology, but it is all text-book based and I wanted real experiences. I would 100 per cent recommend an



apprenticeship to others. I have gained a huge amount of experience in HR.”





**European Union**  
European  
Social Fund



Education & Skills  
Funding Agency



**Greater  
Lincolnshire**  
Local Enterprise Partnership

# SCHEMES



# WHAT IS THE ADULT EDUCATION BUDGET?



This fund is available to help eligible adults aged 19+ learn so that they are better prepared for work, or gain skills that help them to progress within work or change career.

Colleges and training providers can use this funding to deliver qualifications or short courses.

Examples include courses to improve reading, writing and maths, employability, digital tasters or introduction to spreadsheets. For people aged 19-23 their first full

qualification at Level 2 and 3 is likely to be fully funded.

Level 3 is equivalent to 2 A- levels. Additionally from April 2021 Government will fully fund a number of Level 3 qualifications for any adult aged 24 (whether they are employed or out of work) and over who wants to achieve their first full level 3 qualification.

Qualifications on the list have been selected to support the immediate economic recovery and include courses in digital, engineering, construction, care, logistics and more. Full list is available [here](#): Qualifications in new funded offers can be found here [GOV.UK](#)

## Eligibility

19+

## What to do next

Funding and eligibility rules can be complicated. Speak to your local College or training provider for further information

## Organisations delivering AEB

[Boston College](#)

[Community Learning in Partnership \(CLIP\)](#)

[First College](#)

[Grantham College](#)

[Grimsby Institute and University Centre](#)

[LAGAT Limited](#)

[Lincoln College](#)

[Lincolnshire County Council](#)

[North Lindsey College](#)

[Stamford College](#)

[Steadfast Training Ltd](#)

# WHAT ARE APPRENTICESHIPS?



**A**n apprenticeship is a real job where the apprentice learns, gains experience and gets paid, with a contract of employment and holiday leave like any other employee.

It can take between one and six years to complete an apprenticeship depending on which one is chosen, what level it is and the apprentice's previous experience.

It's funded from contributions made by the government and the apprentice's employer.

Someone can start an apprenticeship whether they're starting a career, want a change or want to upskill in their current job. They can have a previous qualification like a degree and still start an apprenticeship.

Currently, there are payment incentives for employers who hire a new apprentice between April 1 2021 and September 30 2021. For more information on incentives for employers please click [here](#).

## Eligibility

Anyone 16+ (no upper age limit)

Living in England

## What to do next

There are lots training and education organisations offering support to employers with their apprenticeship needs, including many in this booklet. Employers seeking advice on recruiting an apprentice for the first time can call 0800 0150 600. Individuals looking for jobs as an apprentice can search the vacancy data base [here](#).

If you are already working your employer might have an apprenticeship opportunity that will help you progress within the workplace.



# WHAT IS BUILDING BETTER OPPORTUNITIES?

**B**uilding Better Opportunities is funded by the National Lottery and the European Social Fund.

It began in 2016 and parts of it will continue to be delivered until 2023.

The programme is delivered by a network of 24 local organisations through two projects.

They provide individual support to help people who are furthest away from the labour market into education, training or employment.

It is independent of Job Centre Plus and participation is not mandatory. Participants have ongoing support from an advisor who help identify what they would like to do, and how to do it.

There are two remaining projects in the Building Better Opportunities ESF programme. MOVE and Engagement into Learning.

## Eligibility

The right to work in the UK  
Unemployed  
Economically inactive

## What to do next

For more information on MOVE and the 24 local organisations delivering support click [here](#)





# WHAT IS THE EMPLOYMENT & SKILLS ESF GRANT?

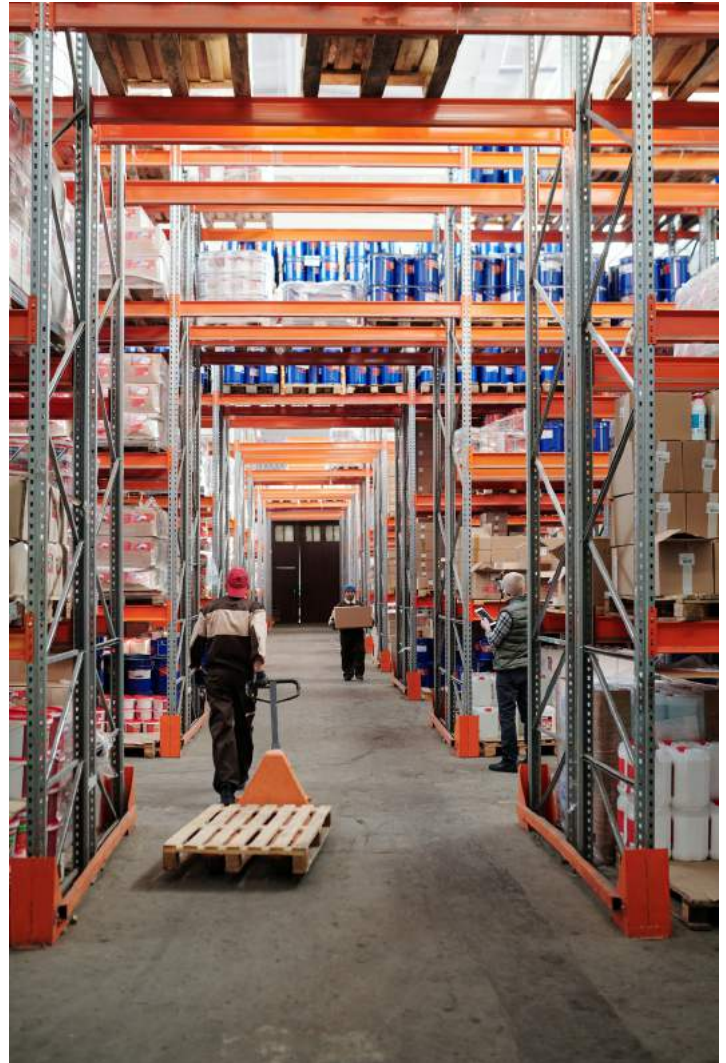
The Greater Lincolnshire LEP Employment & Skills ESF Grant Programme is funded by the Education & Skills Funding Agency and available to third sector and other small organisations who meet the eligibility criteria.

Grants of up to £20K, which are managed by Bishop Grosseteste University, can be provided to help them to support adults to move closer to the labour market or back into work.

Organisations seeking this support are likely to already be working with adults facing multiple barriers and/or in rural locations where access to employment and training support is limited.

30 grants have been awarded since the start of the project in January 2020 and will fund support for 613 local residents.

Recipients include Community Lincs, Grimsby Town Football Club, Hill Holt Wood, Lincolnshire Action Trust, Lincolnshire Traveller Initiative, Vanel and Voluntary Centre Services.



## Eligibility

Organisations and groups that employ less than 49 staff  
A turnover of under £5m p.a

## What to do next

Click [here](#) to find out more



Education & Skills  
Funding Agency

# WHAT IS KICKSTART?

The Kickstart Scheme is a £2 billion fund to create hundreds of thousands of high quality six-month job placements for young people.

Funding available for each job placement will cover the relevant National Minimum Wage for 25 hours a week, plus the associated employer National Insurance contributions and employer minimum automatic enrolment contributions.

There will also be funding available to support young people to help develop new skills including access to the Skills Support for the Workforce programme and move into sustained employment after completing the Kickstart-funded job.



## Eligibility

16 to 24-year-olds

Claiming Universal Credit and at risk of long-term unemployment

Job placements created with Kickstart funding must be new jobs

## What to do next

To find out more about the Kickstart Scheme click [here](#)

# WHAT IS THE NATIONAL CAREERS SERVICE?



**T**he National Careers Service supports people to make decisions on learning, training and work.  
This is a free service available to people who live in England.

The National Careers Service provides high quality, free and impartial careers advice, information and guidance. The service is available to anyone aged 13+ no matter what stage of the careers journey you are at.

## **Eligibility**

Anyone 13+

## **What to do next**

Call the National Careers Service on 0800 100 900 or go to the website by clicking the link [here](#).



# WHAT IS CAREERS NET?



**C**areer Net is funded by the European Social Fund (ESF) and the Education and Skills Funding Agency (ESFA). It has been running since April 2019 and will continue until March 2023. Delivery is led by Community Learning in Partnership (CLIP) and supported by a number of local providers to ensure provision across the whole of the LEP area.

Career Net offers a personalised development programme for unemployed young people, tailored around their existing skills, interests and hopes for the future, connecting with employers for advice and helping them decide which jobs and careers they are suited to.

## Eligibility

Young people aged 15 and at risk of being not in employment, education or training  
Young people aged between 15-24 who are not in employment, education or training

## Organisations delivering ESF Neet

[Community Learning in Partnership \(CLIP\) \(LEAD PROVIDER\)](#)  
[Boston College](#)  
[First College](#)

[Grimsby Institute and University Centre](#)  
[LAGAT Limited](#)  
[Lincoln College](#)  
[Stamford College](#)





# RESTART

The Restart programme was developed as part of the government's [Plan for Jobs](#).

In 2020 £2.9 billion was set aside for the new scheme, which will give Universal Credit claimants, who have been out of work for between 12 to 18 months, extra support in finding employment.

Providers of Restart will work with employers, local government and other partners to up to 12 months of tailored support for individuals offering support of a work coach to find the most appropriate route for the individual.

## Eligibility

People on Universal Credit

Out of work for 12 to 18 months

## What to do next

To find out more about Restart click [here](#) Delivery is set to start July 2121.



# WHAT ARE SECTOR-BASED WORK ACADEMIES?



**S**ector-based Work Academy Programmes are designed to help improve the job prospects of unemployed learners and help employers fill vacancies where there is local demand. The academies last up to six weeks and cover three main components:

**Pre-employment training:** The content of this is dependent on the nature of the industry and offers learners the chance to gain the essential skills that will be relevant to business.

**A work experience**

**placement:** Work placements not only gives participants the chance to work in the environment they are interested in, it also gives them a opportunity to be treated like a regular employee and find out if they are suited to the career path they have chosen.

**A guaranteed job interview:** Every participant will be given a job interview once they complete the course or help with the relevant recruitment process. Giving everyone the chance to have experience at an interview, but also the opportunity to gain employment.

The scheme also helps companies recruit people with the right skills to help grow and build a strong and committed workforce.

## Eligibility

16+

Unemployed

Ready to work and claiming benefits

## What to do next

Employers contact the Employer Services Line on 0800 169 0178. If you are unemployed or claiming benefits please contact your local Jobcentre Plus.

## Organisations Delivering SBWA

[Boston College](#)

[First College](#)

[Grimsby Institute and University Centre](#)

[Lincoln College](#)

[Stamford College](#)

[Steadfast Training Ltd](#)

# WHAT IS SKILLS SUPPORT FOR THE WORKFORCE?

Skills Support for the Workforce (SSW) funded by the European Social Fund (ESF) and the Education and Skills Funding Agency (ESFA) offers free training in a range of occupational sectors across the Greater Lincolnshire area.

Delivered by HCUK Training and in partnership with the Greater Lincolnshire Local Enterprise Partnerships, SSW provides industry-relevant skills training in sectors including Manufacturing, Agri-food,

Visitor economy, Low Carbon, Health & Care, Ports & Logistics and works alongside colleges and training centres across the area. The programme also offers redundancy support through Skills Support for Redundancy for employers making redundancies and individuals who have been made redundant in the past three months. The programme is dedicated to supporting eligible businesses through a range of fully-funded certificated one day courses to NVQ Level 2, 3 and 4. This scheme is set to come to an end in March 2023.



## Eligibility

- Businesses based in Greater Lincolnshire
- SMEs employing up to 250 staff with a turnover of up to £34m
- Larger businesses subject to a business case
- With staff requiring redundancy support
- With staff over the age of 16

## Organisations Delivering SSW

[HCUK Training \(LEAD PROVIDER\)](#)

[Boston College](#)

[First College](#)

[Grantham College](#)

[LAGAT Limited](#)

[Lincoln College](#)

[North Lindsey College](#)



Education & Skills  
Funding Agency

# WHAT IS SKILLS SUPPORT FOR THE UNEMPLOYED?

The Skills Support for the Unemployed programme is an initiative funded by the European Social Fund and aims to support unemployed individuals in Greater Lincolnshire.

It supports people who are facing barriers to finding employment by offering opportunities to upskill in specific areas, improve their CVs, develop interview techniques, acquire effective job seeking skills and to help individuals grow in confidence to find and follow a rewarding route back into work. This scheme is set to come to an end in March 2023.



## Eligibility

Learners must be aged 16 or over  
Be unemployed and looking for work  
In receipt of state benefits

## SSU Greater Lincolnshire Partners

[People Plus \(LEAD PROVIDER\)](#)

[Abbey Access Training](#)

[Boston College](#)

[First College](#)

[Grantham College](#)

[LAGAT Limited](#)

[Lincoln College](#)

[North Lindsey College](#)



Education & Skills  
Funding Agency



# WHAT ARE TRAINEESHIPS?

**T**he Traineeship programme is designed to support young people to find employment in their chosen industry.

It is a skills development programme that includes a work placement and can last from six weeks up to one year.

As part of the Traineeship Programme, learners must complete a minimum of 70 hours in a high-quality work placement with a local employer.

For every individual trainee (up to a maximum of 10 per business) you will receive a £1,000 government incentive. You will also be instrumental in shaping the skills and experience of young people in your community, in turn helping you to develop a loyal and talented workforce.



## Eligibility

Aged 16-24

Be unemployed

Educated to Level 2 or below

## What to do next

Additional information about Traineeships can be found [here](#)

## Organisations Delivering Traineeships

[Boston College](#)

[First College](#)

[LAGAT Limited](#)

[Lincoln College](#)

# SUCCESS STORIES



**David Davidson -  
Ørsted Offshore  
Wind Technician  
Apprentice**

**D**avid Davidson, one of our inaugural Ørsted Maintenance and Operations Engineering Technician (MOET) programme students, has become the first apprentice to fully qualify as a wind turbine technician.

He took part in the award-winning MOET programme with Grimsby Institute, which started in 2017 in collaboration with Ørsted - the global-leader in offshore wind power.

David secured a distinction in his final assessment and works at the Race Bank offshore wind farm where he continues to help the UK transition to renewable energy.

He said: "Now I have completed my apprenticeship at Ørsted I have hit the ground running with my future career path. I could not be more grateful for the opportunities I have been given. I will continue to recommend the Grimsby Institute MOET program to anyone who wants to join this expanding industry."

In his second year with us, David entered the National Trade Apprentice of the Year competition, sponsored by Screwfix, and reached the final 10 from thousands of apprentices nationwide.

He did a fantastic job, coming 'first runner up' overall, and won a special prize for his STEM Ambassador role which he did here with us. Part of that prize was funding to support him further in this role. We are immensely proud of David and his fellow colleagues who have completed this programme.

The Ørsted UK Apprentice Programme at the Grimsby Institute provides a fantastic opportunity for apprentices to build a strong foundation of capability that will enable future progression within the offshore wind industry such as engineering, management, safety and project management.



Delivery

Partners





# SUCCESS STORIES



**“Studying in the workplace means I can gain the real-life, hands on experience that I need to progress in the early years sector.”**

Charlie Parker, Childcare Apprentice, Stamford College

**“I have enjoyed completing the course with HCUK Training and will consider further training in the future. I feel more confident now about how to train my team in customer service and retail.”**

Anna Green, SSW Level 2  
Customer Service,  
Direct Delivery





## Who Do We Support

· 16+ · 19+ · NEET · Self-employed · Unemployed · Redundant

## Geographic Coverage

· City of Lincoln

## Location

Arboretum Lodge, Monks Road, Lincoln, LN2 5HU

## Subject Areas

· Construction · Education/Training · Functional Skills – English And Maths · Hospitality  
· Retail & Customer Service

## About us

With high-quality, supportive and friendly training delivered from our inner-city park setting, Abbey Access Training provides the qualifications, knowledge and employment skills needed within the local community to support the unemployed. The centre's training is designed to improve your skills and enhance success in the job market. Abbey Access Training has successfully helped people gain employment, even in recent difficult times. More than 5,000 people have found work again through our supported employment skills programme. Abbey Access Training aims to contribute to the economic, social and environmental regeneration of the Abbey Ward and its surrounding areas. We deliver this by offering programmes that develop voluntary, training, educational skills and community activities. All members of the community can use the centre as a source of free information, support and advice on a variety of subjects.

## Contact Us

· Gail Dunn · 01522 801556 · [info@abbeyaccesstraining.co.uk](mailto:info@abbeyaccesstraining.co.uk)

## Who Do We Support

- 16+ · 19+ · NEET · Self-employed · Employed · Unemployed · Redundant · Under notice of Redundancy · Graduates · Micro Business · Small to Medium Business · Large Business



## Geographic Coverage

- East Lindsey, North Kesteven, South Holland, Boston

## Location

- Boston College, Skirbeck Road, Boston, PE21 6JF
- Boston College - Spalding, Red Lion Street, Spalding, PE11 1SX

## ESF & Government Funded Schemes Delivered

- Adult Education Budget · Apprenticeships · Careers NET (ESF NEET) · Skills Support for the Unemployed · Skills Support for the Workforce · Building Better Opportunities · Traineeship · Sector-Based Work Academies

## Subject Areas

- Administrative and Support Services Activities · Agri-food · Agriculture · Forestry & Fisheries · Arts, Entertainment and Recreation · Business & Management · Construction · Education/Training · Financial and Insurance · Functional Skills – English And Maths · Health & Safety · Health & Social Work Care · Hospitality · Low Carbon · Management · Manufacturing · Online E-Learning · Ports & Logistics · Public Administration and Defence · Professional, Scientific and Technical · Retail & Customer Service · Social Media & Marketing · Transportation/Logistics/Motor Vehicle repair · Visitor Economy · Warehousing · Graphic Design · Media

## Levels Offered

- Entry Level 2 · Level 1 to 6 · GCSE · A Levels · T Levels · Degree

## About Us

Boston College is committed to supporting businesses to succeed and to create better future opportunities for the workforce. Over the past 50 years we have build a successful record working with employers from small start-up businesses to multinational corporations across almost every sector. Our experience in designing and delivering training programmes together with our excellent customer service means we can effectively support our local businesses through accredited, industry-standard training, bespoke skills-solutions and complete flexibility.

## Contact

George Bell, 01205 313242 · [employers@boston.ac.uk](mailto:employers@boston.ac.uk) · [www.boston.ac.uk](http://www.boston.ac.uk)

[CLICK HERE TO FIND OUT MORE ABOUT HOW WE HELPED ALBERT BARTLETT](#)

## Who Do We Support

- 16+ · 19+ · NEET · Self-employed · Employed · Unemployed · Redundant · Under notice of Redundancy · Graduates



## Geographic Coverage

East Lindsey, West Lindsey

## Location

- Market Rasen Learning Centre, 8 Queen Street, Market Rasen, LN83EH
- The Bridge Learning Centre, 142 Bridge Street, Gainsborough, DN21 1LP
- Mablethorpe College, Seacroft Road, Mablethorpe, LN122DT

## ESF & Government Funded Schemes Delivered

- Adult Education Budget · Career NET (ESF NEET)

## Subject Areas

- Education/Training · Functional Skills – English And Maths · Health & Social Work Care
- Hospitality · Online E-Learning · Professional · Scientific and Technical · Retail & Customer Service

## Levels Offered

- Entry Level 1 & 2 · Level 1 to 3

## About Us

With equal commitment we work with young people aged 16-18 who have underachieved at school and with adults who are looking to refresh their skills. This maybe for personal development, family, higher education or employment. Employability support is delivered through Career NET (ESF NEET) Programme for 15-24 year olds who are not in education, employment or training (NEET). CLIP is also committed to supporting people who have experienced mental health difficulties. CLIP has a team of supportive and welcoming staff who work hard to provide clear information, advice and guidance to help you to achieve your goals, and to develop your confidence to help you reach them. We offer a range of high-quality courses to support you to achieve your ambitions, alongside courses for wellbeing and personal growth.

## Contact Details

CLIP · 01673 843489 · info@cliplearning · www.cliplearning.com

## Who Do We Support

· 16+ · 19+ · NEET · Self-employed · Employed · Unemployed · Redundant · Under notice of Redundancy · Graduate · Micro Business · Small to Medium Business · Large Business



## Geographic Coverage

· East Lindsey

## Location

· Unit 3 Louth Station Estate Louth Lincolnshire LN11 OJT  
· 19 Ida Road Skegness Lincolnshire PE25 2AR

## ESF & Government Funded Schemes Delivered

· Adult Education Budget · Apprenticeships · Careers NET (ESF NEET) · Skills Support for the Workforce · Skills Support for the Unemployed · Traineeship · Sector-Based Work Academy

## Subject Areas

· Administrative and Support Services Activities · Business & Management · Education/Training · Financial and Insurance · Functional Skills – English And Maths · Health & Safety · Hospitality, Management · Online E-Learning · Retail & Customer Service · Social Media & Marketing

## Levels Offered

· Level 1 to 5

## About Us

First College is a work-based learning provider and charitable trust delivering diverse learning, qualifications and employment services. Whatever your ability we can help. By choosing First College you will receive a tailored and blended approach to your learning, through a variety of support tools to fit in with your job and lifestyle to gain a recognised qualification. Renowned for our flexibility and responsiveness we play an invaluable role in development of individuals skills, whilst meeting the needs of our employer partners.

## Contact number

· Jude Ingram · 01507 601122 · [Jude.Ingram@firstcollegelincs.co.uk](mailto:Jude.Ingram@firstcollegelincs.co.uk)  
· [www.firstcollegelincs.co.uk](http://www.firstcollegelincs.co.uk)



## Who Do We Support

· 16+ · 19+ · NEET · Self-employed · Employed · Unemployed · Redundant · Under notice of Redundancy · Graduates · Micro Business · Small to Medium Business



## Geographic Coverage

South Kesteven

## Location

Stonebridge Road, Grantham, Lincs, NG31 9AP

## ESF & Government Funded Schemes Delivered

· Adult Education Budget · Apprenticeships · Skills Support for the Workforce

## Subject Areas

· Administrative and Support Services Activities · Arts, Entertainment and Recreation · Business & Management · Construction · Education/Training · Energy/Utilities · Financial and Insurance · Functional Skills – English And Maths · Health & Safety · Health & Social Work Care · Hospitality · Low Carbon · Management · Manufacturing · Online E-Learning · Public Administration and Defence · Professional · Scientific and Technical · Retail & Customer Service · Social Media & Marketing · Transportation/Logistics/Motor Vehicle repair · Visitor Economy

## Levels Offered

· Entry Level 1 & 2 Level 1 to 5 · GCSE · T Levels

## About us

We offer fully-funded vocational and technical training for SMEs at all levels, individual skills training for employed and unemployed people. We also deliver tailored support packages for those furthest from the labour market with focussed vocational and employability provision for young people seeking work or upskilling opportunities. We have a designated employer engagement team to support businesses identify and address skills needed within their business along with a wide-range of training provision at all levels to facilitate staff development and business growth.

## Contact

· 01476 400200 · gharley@grantham.ac.uk

# GRIMSBY INSTITUTE & UNIVERSITY CENTRE GRIMSBY

## Who Do We Support

· 16+ · 19+ · NEET · Self-employed · Employed · Unemployed · Redundant · Under notice of Redundancy · Graduates · Micro Business · Small to Medium Business · Large Business



University Centre  
Grimsby

## Geographic Coverage

North East Lincolnshire

## Location

Grimsby Institute, Nuns Corner, Grimsby, North East Lincolnshire, DN34 5BQ

## ESF & Government Funded Schemes Delivered

· Adult Education Budget · Apprenticeships · Careers NET (ESF NEET) · Skills Support for the Unemployed · Skills Support for the Workforce · Sector-Based Work Academies

## Subject Areas

Administrative and Support Services Activities, Arts, Entertainment and Recreation, Business & Management, Construction, Education/Training, Financial and Insurance, Functional Skills – English And Maths, Health & Social Work Care, Hospitality, Management, Online E-Learning, Retail & Customer Service, Social Media & Marketing, Transportation/Logistics/Motor Vehicle repair, Visitor Economy

## About Us

When you are deciding on a career route or looking for the right training for your perfect career, Grimsby Institute is a great place to start. We have tutors with industry experience to offer realistic working environments with industry-standard facilities and resources. Being the only Ofsted Outstanding college in Grimsby, Lincolnshire and the Humber we have a 94% pass rate We also offer excellent links to local, national and international employers and together we will fully support you to join the workforce with an industry recognised qualification.

## Levels Offered

· Entry Level 1 & 2 · Level 1 to 7 · GCSE · A Levels · T Levels · Degree

Contact us

· General Enquiries · 0800 315002 · [infocent@grimsby.ac.uk](mailto:infocent@grimsby.ac.uk) · [www.grimsby.ac.uk](http://www.grimsby.ac.uk)

[CLICK HERE TO FIND OUT HOW WE HELPED APPRENTICE DAVID DAVIDSON](#)

## Who Do We Support

- 16+ · Self-employed · Employed · Redundant · Under Notice of Redundancy
- Micro Business · Small to Medium Business · Large Business

## Geographic Coverage

Greater Lincolnshire

## Location

- Various training centres · Onsite · Online

## ESF & Government Funded Schemes Delivered

- Skills Support for the Workforce

## Subject Areas

- Administrative and Support Services Activities · Business & Management · Education/Training
- Functional Skills – English And Maths · Health & Social Work Care · Hospitality, Management · Manufacturing · Online E-Learning · Retail & Customer Service · Social Media & Marketing · Visitor Economy · Warehousing · Volunter Mangement · Lone Worker Management

## Levels Offered

Level 1 to 4

## About us

With the support of ESF and ESFA funding, we offer industry-relevant fully-funded training to SME and micro businesses throughout the Greater Lincolnshire area. We will work with you and your employees to identify your unique training needs and skills gaps and develop a training matrix to help you build a confident and skilled workforce. Our qualified and experienced tutors will then work closely with you to delivered free, accredited, training through either a training centres, at your workplace, fully online or blended.

## Contact Details

- Dan Stratton · 07944 271103 · [daniel.stratton@hcuktraining.ac.uk](mailto:daniel.stratton@hcuktraining.ac.uk)



[CLICK HERE TO FIND OUT HOW WE HELPED ANNA GREEN'S SMALL BUSINESS](#)

## Who Do We Support

· 16+ · NEET · Employed · Unemployed · Redundant · Under notice of Redundancy · Micro Business · Small to Medium Business · Large Business



## Geographic Coverage

· East Lindsey · West Lindsey · North East Lincolnshire · North Lincolnshire · South Kesteven · North Kesteven · South Holland · City of Lincoln · Boston

## Location

· LAGAT Training Centre, Spring Hill House, Lincoln, LN1 1HB

## ESF & Government Funded Schemes Delivered

· Adult Education Budget · Apprenticeships · Careers NET (ESF NEET) · Skills Support for the Workforce · Skills Support for the Unemployed · Traineeship

## Subject Areas

· Administrative and Support Services · Activities Business & Management  
· Education/Training · Financial and Insurance · Functional Skills – English And Maths  
· Hospitality, Management · Online E-Learning · Retail & Customer Service  
· Social Media & Marketing · Visitor Economy

## About Us

Offering training in the area for the past 30 years, we work with a variety of partners to deliver tailor-made courses online, blended or inhouse. Our courses can be accessed at any time of the year and offer flexible training to meet your business's needs.

## Levels Offered

Level 1 to 5

## Contact number

· Sadie Canner, 01522501300 · scanner@lagat.co.uk · www.lagat.co.uk

[CLICK HERE TO SEE HOW WE HELPED PAGE NELSON SOLICITORS](#)

## Who Do We Support

· 16+ · 19+ · NEET · Self-employed · Employed · Unemployed · Redundant · Under notice of Redundancy · Graduates · Micro Business · Small to Medium Business · Large Business

## Geographic Coverage

· East Lindsey · West Lindsey · North East Lincolnshire · North Lincolnshire · South Kesteven · North Kesteven · South Holland · City of Lincoln · Boston · Newark · Nottinghamshire

## Location

Lincoln College, Monks Road, Lincoln LN2 5HQ

## ESF & Government Funded Schemes Delivered

· Adult Education Budget · Apprenticeships · Careers NET (ESF NEET) · Skills Support for the Workforce · Skills Support for the Unemployed · Traineeship · Sector-Based Work Academies

## Subject Areas

· Administrative and Support Services Activities · Arts, Entertainment and Recreation · Business & Management · Construction · Education/Training · Energy/Utilities · Financial and Insurance · Functional Skills – English And Maths · Health & Safety · Health & Social Work Care · Hospitality · Low Carbon · Management · Manufacturing · Online E-Learning · Passenger Transport · Ports & Logistics · Public Administration and Defence · Professional · Scientific and Technical · Retail & Customer Service · Social Media & Marketing · Telecommunication · Transportation/Logistics/Motor Vehicle repair · Visitor Economy · Warehousing · Wholesale and Retail Trade

## Levels Offered

· Entry Level 1 · Entry Level 2 · Level 1 · Level 2 · GCSE · Level 3 · A Levels · T Levels · Level 4 · Level 5 · Level 6 · Degree

## About Us

Lincoln College is employer-led with tailored programmes to meet the specific needs of the community, local markets and organisations. We're a not for profit organisation offering an extensive range of courses to suit all abilities and age groups

## Contact Details

Donna Moorhouse · 01522 876000 · [www.lincolncollege.ac.uk](http://www.lincolncollege.ac.uk)



## Who Do We Support

- 19+ · NEET · Self-employed · Employed · Unemployed · Redundant
- Under notice of Redundancy · Graduates

## Geographic Coverage

East Lindsey, West Lindsey, South Kesteven, North Kesteven, South Holland, City of Lincoln, Boston

## Location

Lincolnshire County Council, Sleaford County Offices, Adult Skills & Family Learning Service, Office 2, Eastgate, Sleaford, Lincs., NG34 7EB

## ESF & Government Funded Schemes Delivered

- Adult Education Budget

## Subject Areas

- Administrative and Support Services Activities · Business & Management
- Construction · Education/Training · Functional Skills – English And Maths
- Health & Safety · Health & Social Work Care · Hospitality, Management · Online E-Learning · Retail & Customer Service · Social Media & Marketing · Visitor Economy
- Warehousing

## Levels Offered

- Entry Level 1 & 2 · Level 1 to 2 · GCSE

## About Us

Lincolnshire County Council's Adult Skills & Family Learning Service provides a wide-range of skills and wellbeing courses to engage adults in learning. The service aims to create the right conditions for individuals to learn and be ready to fill future jobs and progress in their careers. Working with local Training Providers across Lincolnshire we deliver accessible and responsive learning programmes that are rewarding, enjoyable and constructive in meeting the needs of the local economy.

## Contact Details

- Thea Croxall · 07789 982248 · BS\_LearningLH@lincolnshire.gov.uk
- [www.2aspire.org.uk](http://www.2aspire.org.uk)

## Who Do We Support

· 16+ · 19+ · NEET · Self-employed · Employed · Unemployed · Redundant  
· Under notice of Redundancy · Graduates · Micro Business · Small to Medium Business · Large Business

## Geographic Coverage

North East Lincolnshire, North Lincolnshire,

## Location

Kingsway, Scunthorpe, North Lincs, DN17 1AJ

## ESF & Government Funded Schemes Delivered

· Adult Education Budget · Apprenticeships · Skills Support for the Workforce

## Subject Areas

· Administrative and Support Services Activities · Business & Management  
· Construction · Education/Training · Energy/Utilities · Financial and Insurance  
· Functional Skills – English And Maths · Health & Safety · Health & Social Work Care  
· Hospitality · Low Carbon · Management · Manufacturing · Mining and Quarrying Manufacturing ·  
Online E-Learning · Public Administration and Defence · Professional  
· Scientific and Technical · Retail & Customer Service · Social Media & Marketing  
· Telecommunication · Visitor Economy · Wholesale and Retail Trade  
· Engineering

## Levels Offered

Accredited Courses Level 2 to 4

## About Us

North Lindsey College supports access to training and development including Further Education, Apprenticeships, Adult Education Budget, European Social Funding and Higher Education including academic qualifications, industry qualifications and bespoke training. We provide careers guidance, employer training needs analysis and a range of support services for employers and individual learners to facilitate access to learning and development to support business sustainability and growth and progression of individuals towards their career. Our focus is ensuring our provision supports the economic sustainability and growth of organisations in our region; including recruitment, retention and development of staff and maximising the potential of resources to transforming our communities through learning.

## Contact name.

· Business Development Team · 01724 709433 · employertraining@northlindsey.ac.uk  
· www.northlindsey.ac.uk

## Who Do We Support

· 16+ · 19+ · NEET · Self-employed · Employed · Graduates

## Geographic Coverage

North Lincolnshire

## Location

Riseholme College, Showground Campus, Horncastle Lane, North Carlton, LN1 2ZR

## Schemes Available

· Apprenticeships

## ESF & Government Funded Schemes Delivered

· Agri-food · Agriculture · Forestry & Fisheries · Business & Management  
· Education/Training · Animal Management · Engineering · Equine · Horticulture

## Levels Offered

· Entry Level 1 & 2 · Level 1 to 6 · GCSE · T Levels · Degree

## About Us

Specialising in Agriculture, Animal Management and Equine, Riseholme College also offers a wide-range of other full and part-time vocational courses as well as apprenticeships and short courses. Each year the college supports over 250 local employers in sectors that include agriculture, leisure and retail, manufacturing and the chemical industry. It also delivers training for more than 200 apprenticeships. Riseholme College is part of the Lincolnshire Institute of Technology (IoT), a collaboration between employers, college and university level education providers. Offering a new strand of cutting-edge agricultural education, students studying one of the IoT programmes will focus on precision farming techniques to improve productivity, reduce skills gaps and support industry growth.

## Contact Details

· Recruitment Team · 01522 304600 · [enquiries@riseholme.ac.uk](mailto:enquiries@riseholme.ac.uk) · [www.riseholme.ac.uk](http://www.riseholme.ac.uk)



## Who Do We Support

- 16+ · 19+ · NEET · Self-employed · Employed · Unemployed · Redundant · Under notice of Redundancy
- Graduates · Micro Business · Small to Medium Business
- Large Business



## Geographic Coverage

South Kesteven

## Location

Stamford College, Drift Road, Stamford, PE9 1XE, and a wide-range of community and employer venues across South Lincolnshire

## ESF & Government Funded Schemes Delivered

- Adult Education Budget · Apprenticeships · Careers NET (ESF NEET) · Skills Support for the Workforce · Skills Support for the Unemployed · Sector-Based Work Academies

## Subject Areas

- Administrative and Support Services Activities · Arts · Entertainment and Recreation
- Business & Management · Construction · Education/Training · Financial and Insurance
- Functional Skills – English And Maths · Health & Safety · Health & Social Work Care
- Hospitality, Management · Manufacturing · Online E-Learning · Public Administration and Defence
- Professional · Scientific and Technical · Retail & Customer Service · Social Media & Marketing · Telecommunication · Transportation/Logistics/Motor Vehicle repair
- Visitor Economy · Warehousing · Wholesale and Retail Trade

## Levels Offered

Entry Level 1 & 2 · Level 1 to 6 · GCSE · A Levels · Degree

## About Us

Stamford College delivers a wide-range of high-quality training, study programmes and apprenticeships – full-time, part-time, in the workplace, at venues across South Lincolnshire and online - from basic entry level to degree level study. We offer flexible delivery options and can tailor training to your individual needs. We also work with a number of specialist partners to offer courses in accountancy, English, maths, ESOL, health and social care, car bodywork and paint repair, MOT tester training and gas service accreditation.

## Contact number

· Alison Fox · 01780 484315 · [alison.fox@stamford.ac.uk](mailto:alison.fox@stamford.ac.uk) · [www.stamford.ac.uk](http://www.stamford.ac.uk)

[CLICK HERE TO FIND OUT HOW WE HELP APPRENTICE CHARLIE PARKER](#)

## Who Do We Support

· 16+ · 19+ · Employed · Unemployed · Small to Medium Business  
Large Business



## Geographic Coverage

· South Holland · Work-based learning

## Location

· Steadfast Training Ltd, 5 Enterprise Way, Spalding, Lincolnshire, PE11 3YR · Work-based learning

## ESF & Government Funded Schemes Delivered

· Adult Education Budget · Apprenticeships · Sector-Based Work Academies

## Subject Areas

· Administrative and Support Services Activities · Business & Management · Health & Social Work  
Care · Management · Retail & Customer Service · Social Media & Marketing  
· Warehousing

## Levels Offered

· Entry Level 1 & 2, Level 1 to 5

## About Us

We are a training provider that delivers first -class skills, employability and training solutions to create better futures for individuals, families, businesses and communities.

## Contact number

· Chloe Robinson · 08452232401 · [chloe.robinson@steadfasttraining.co.uk](mailto:chloe.robinson@steadfasttraining.co.uk) · [www.steadfasttraining.co.uk](http://www.steadfasttraining.co.uk)

[CLICK HERE TO FIND OUT HOW WE HELPED APPRENTICE KELLY MOFFAT](#)





North Lincolnshire Council enlisted the support of Riseholme College to develop an apprenticeship programme that would encourage more young people to get into horticulture, thus improving skills in the community and providing a horticultural workforce that the council will require to maintain the area's parkland and gardens in the future.

In recent years more than 15 apprentices

have completed NVQ Level 2 courses in Horticulture at Riseholme College.

John Bailey from North Lincolnshire Council believes that apprenticeships are a great way to encourage the younger generation into the horticultural industry. John explains, 'apprenticeships in horticulture not only help to boost the local economy by creating jobs, they also provide opportunities to improve the skill set of the local workforce.'

"LAGAT is our first port of call for new staff needs. The initial recruitment process is extremely simple and the ongoing support from LAGAT is very comprehensive. Three of our current staff began as LAGAT apprentices and are now making excellent progress within the firm and have great long-term prospects. The quality of candidates presented to us by LAGAT is always outstanding, particularly in terms of their drive and determination. We've found consistently that once they're given



a chance to show what they can do, our apprentices have unlocked hidden potential and are able to contribute to the business in ways that have surprised them. This new-found self-belief is an incredibly positive thing for any employer to see."

**Page Nelson Solicitors**

## AVANT SKILLS ACADEMY

Pearl Assurance House, George Street, Grimsby,  
DN31 1HB · 01472 426624 · info@avant.ac.uk ·  
www.avant.ac.uk

## ABBAY ACCESS TRAINING

Arboretum Lodge, Monks Road, Lincoln, LN2 5HU  
· 01522 801556 · info@abbeyaccesstraining.co.uk

## BISHOP GROSSETESTE UNIVERSITY (MOVE )

Longdales Rd, Lincoln LN1 3DY · 01522 527347 ·  
www.bishopg.ac.uk/about-bgu/move-project

## BOSTON COLLEGE

Boston College, Skirbeck Road, Boston PE21 6JF  
· 01205 313242 · employers@boston.ac.uk

## CATCH

Redwood Park Estate Stallingborough Grimsby  
DN41 8TH · 01469 552828 · info@catchuk.org

## CHILDREN'S LINKS

Suite 1 & 4, Gymplex Buildings, Boston Road,  
Horncastle, Lincolnshire, LN9 6HU · childrenslinks.  
org.uk

## COMMUNITY LEARNING IN PARTNERSHIP (CLIP)

Market Rasen Learning Centre, 8 Queen Street,  
Market Rasen, LN83EH.  
01673 843489 · info@cliplearning

## FIRST COLLEGE

Unit 3 Louth Station Estate Louth Lincolnshire  
LN11 OJT. 01507 601122 · Jude.Ingram@firstcol-  
legelincs.co.uk

## GRANTHAM COLLEGE

Stonebridge Road, Grantham, Lincs, NG31 9AP ·  
01476 400200 · gharley@grantham.ac.uk

## GREATER LINCOLNSHIRE LOCAL ENTERPRISE PARTNERSHIP

Lancaster House, 36 Orchard St, Lincoln LN1 1XX ·  
01522 550540 · www.greaterlincolnshirelep.co.uk

## GRIMSBY INSTITUTE AND UNIVERSITY CENTRE

Nuns Corner, Grimsby, North East Lincolnshire,  
DN34 5BQ · 0800 315002  
· info@cent@grimsby.ac.uk ·

## HETA ENGINEERING APPRENTICESHIPS AND UPSKILLING TRAINING

Kiln Lane, Stallingborough, Grimsby, DN41 8TH ·  
01469 552880 · www.eta.co.uk/

## HCUK TRAINING

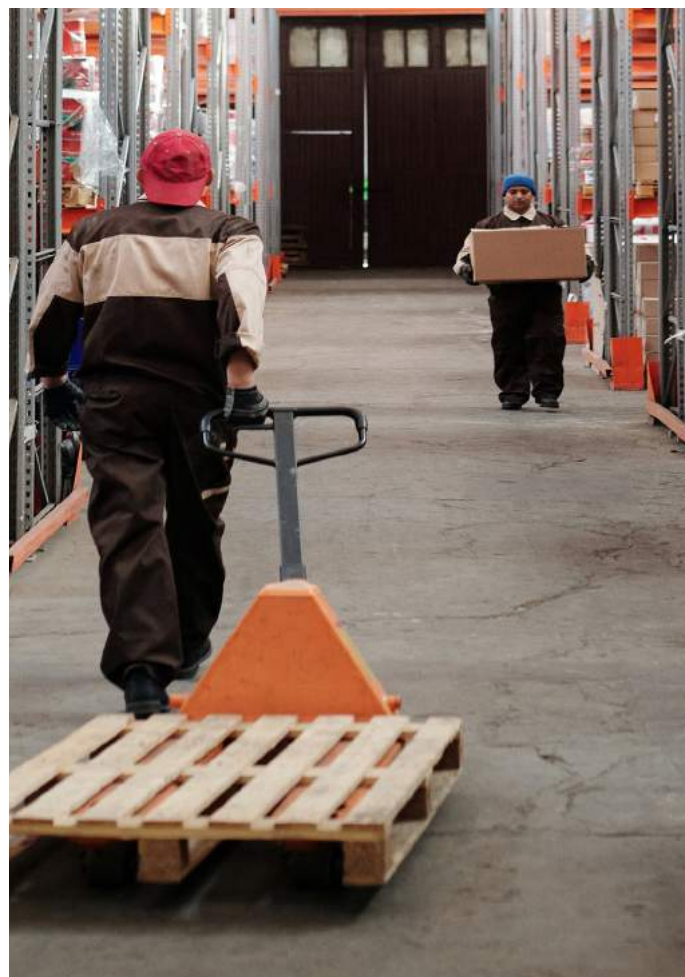
Riseholme College, Lincoln · 07944 271103 · dan-  
iel.stratton@hcuktraining.ac.uk

## LAGAT LIMITED

LAGAT Training Centre, Spring Hill House, Lincoln,  
LN1 1HB · 01522501300 · scanner@lagat.co.uk

## LINCOLN COLLEGE

Monks Road · Lincoln · LN2 5HQ · 01522 876000  
· [www.lincolncollege.ac.uk](http://www.lincolncollege.ac.uk)





# CONTACT DETAILS

## LINCOLNSHIRE COUNTY COUNCIL

Sleaford County Offices, Office 2, Eastgate, Sleaford, Lincs, NG34 7EB · 07789 982248  
· BS\_LearningLH@lincolnshire.gov.uk

## NORTH EAST LINCOLNSHIRE EMPLOYABILITY SUPPORT

The Val Waterhouse Centre, 41-43 Kent St, Grimsby · DN32 7DH · 01472 256730  
· www.nelincs.gov.uk

## NORTH LINCOLNSHIRE COUNCIL ADULT AND COMMUNITY LEARNING

Ashby High Street Scunthorpe North Lincolnshire DN16 2UT · 01724 297146 · nlacl.enquiries@north-lincs.gov.uk · www.northlincsadulteducation.co.uk

## NORTH LINDSEY COLLEGE

Kingsway, Scunthorpe, North Lincs, DN17 1AJ · 01724 709433  
· employertraining@northlindsey.ac.uk

## PEOPLE PLUS

www.peopleplus.co.uk

## RISEHOLME COLLEGE

Showground Campus, Horncastle Lane, North Carlton, LN1 2ZR · 01522 304600  
· enquiries@riseholme.ac.uk · www.riseholme.ac.uk

## RIVERSIDE TRAINING

First Floor Offices 11-23 Market Street Gainsborough Lincolnshire DN21 2BL · 01427 677 277 · enquiries@riverside-training.org.uk  
· www.riverside-training.org.uk

## STAMFORD COLLEGE

Drift Road, Stamford, PE9 1XE · 01780 484315 · alison.fox@stamford.ac.uk

## STEADFAST TRAINING LTD

5 Enterprise Way, Spalding, Lincolnshire, PE11 3YR 0845 2232401  
· chloe.robinson@steadfasttraining.co.uk  
· www.steadfasttraining.co.uk

## UNIVERSITY OF LINCOLN

Brayford Pool · Lincoln · LN6 7TS · 01522 882000  
· enquiries@lincoln.ac.uk · www.lincoln.ac.uk







For more information about the Greater Lincolnshire Local Enterprise Partnership visit the website by clicking [here](#)



This e-booklet has been compiled by HCUK for the Greater Lincolnshire LEP. It is aimed at organisations who want to find out more about ESF and government funded schemes. This is the first edition and we recognise that there are some omissions. With that in mind please contact the Greater Lincolnshire LEP's Employment and Skills Manager [Clare.hughes@lincolnshire.gov.uk](mailto:Clare.hughes@lincolnshire.gov.uk)

