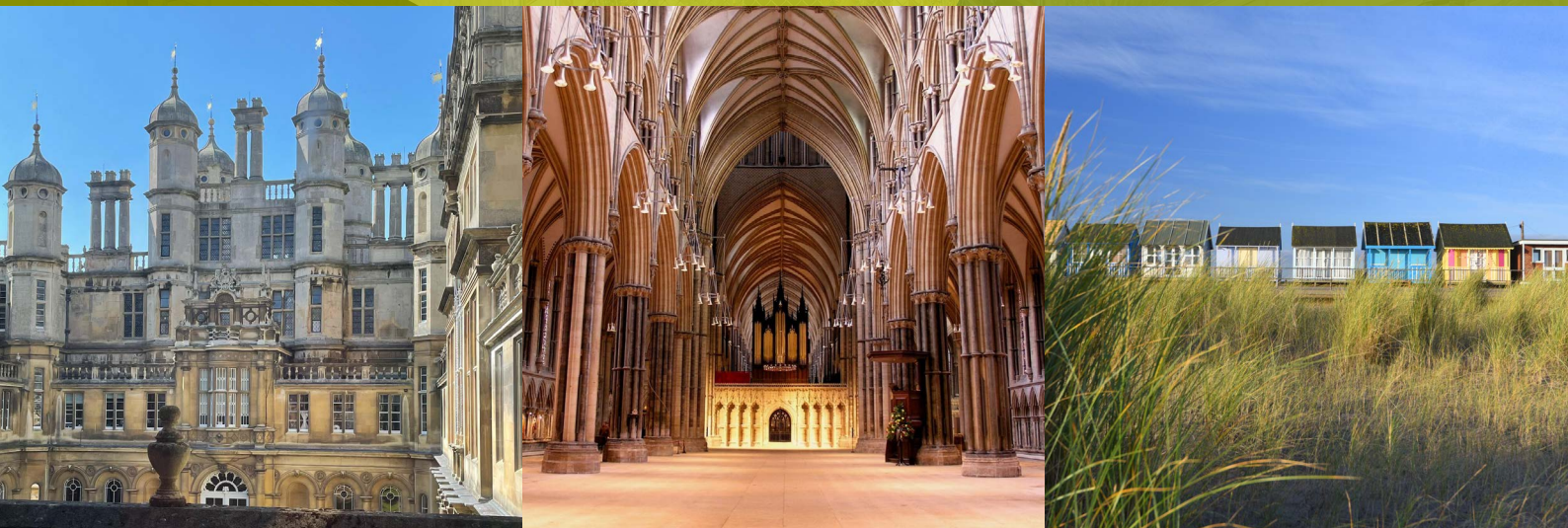


Greater Lincolnshire UK

# The Film Location Opportunity







# Contents

---

## Contents **03**

---

### The Film Location Opportunity **04**

---

### Easy access to a diversity of locations **06**

---

### Showcase locations **09**

---

### A proven track record – and untapped potential **12**

---

### Available, low-cost space and storage **16**

---

### Low-cost accommodation and catering services **17**

---

### Responsive road control and closure **18**

---

### Proximity to UK production hubs **19**

---

### Supportive local universities, colleges and creative industries **20**

---

### A region committed to sustainability **21**

---

### Dedicated support from the Film Lincolnshire team **22**

---

### Film locations map and directory **23**

---

### Film locations directory **24**

---

### Support for your film production **26**

---



# The Film Location Opportunity

Welcome  
to Greater  
Lincolnshire

Greater Lincolnshire is a large, diverse region with a variety of strikingly different locations and landscapes.

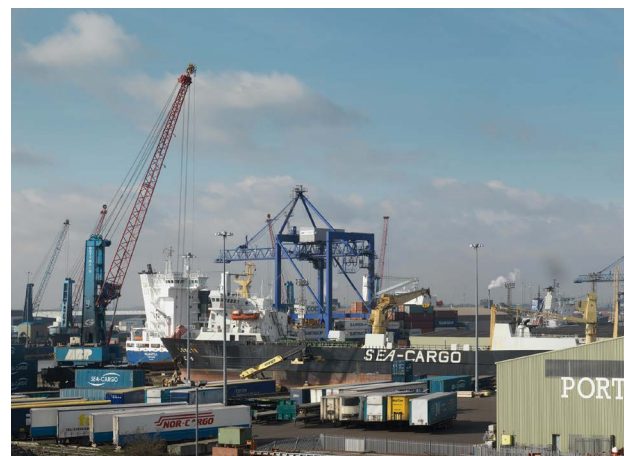
The area encompasses a heritage cathedral city and quintessentially English market towns; countryside ranging from the wide-open Fens to the rolling hills of the Wolds; and a long, varied coastline offering traditional seaside resorts, vast, empty beaches, and wild nature reserves.

Other distinctive features include extensive agriculture, industrial complexes, working and heritage ports, and several impressive stately homes.

We're pleased to present our region to you, and to introduce the support available to production companies researching suitable locations and filming here.

We look forward to the prospect of working with you.

*The Film Lincolnshire team*



Credit: ABP



**For production companies, Greater Lincolnshire combines diverse locations and a proven track record with affordability, accessibility and dedicated support for film productions.**

**The region's key benefits as a film location include:**

- ✓ A proven track record of support to HETV, Feature and other levels of production
- ✓ Easy access (and permissions) to varied and adaptable filming locations
- ✓ Novel, undiscovered locations compared with high-profile UK regions
- ✓ Available, low-cost space for storage and parking
- ✓ Available, cost-effective accommodation and catering services
- ✓ An overall low cost base compared with other popular UK regions
- ✓ Relatively low visitor numbers and population densities
- ✓ Low congestion, enabling ease of movement and large road closures
- ✓ Proximity and easy access to the UK's primary production hubs
- ✓ Supportive local universities, colleges and creative industry organisations
- ✓ An ambitious regional sustainability strategy

## Support from Film Lincolnshire

The Film Lincolnshire team, part of Lincolnshire County Council, adds additional value through specialised services for film production companies, in areas including:

- Identifying suitable locations and securing permissions
- Identifying and negotiating accommodation for crew
- Expediting road closure permits
- Providing access to extensive regional knowledge, contacts and networks (recognised by Creative England as a key Lincolnshire benefit)
- A single point of contact for enquiries and permits

**Contact us to find out how we can support your production.**





# Easy access to a diversity of locations

In Greater Lincolnshire, distinctively different landscapes and filming locations, both outdoor and indoor, are accessible within small areas, with relatively low visitor numbers and population densities enabling fast, easy travel via uncongested roads. For production companies, this means less time spent travelling and lower costs.



## The City of Lincoln

The City of Lincoln is centred on the Cathedral Quarter and its concentration of heritage streets and buildings. They include Lincoln Cathedral, with its twin towers, cloisters and chapter house, and the Norman Lincoln Castle, with its well preserved walls and Victorian Prison.







### Greater Lincolnshire's countryside

Greater Lincolnshire's countryside encompasses the rolling Wolds, the flat Fens and the most northerly point of the Cotswolds, with Stamford and nearby villages built from distinctive Cotswold stone. The region offers numerous quaint, 'typically English' villages and hamlets, castles and stately homes with beautiful grounds, and ancient abbeys.

View Creative England's brochure:  
[Lincolnshire Castles & Manors](#)



### Greater Lincolnshire's coast

Greater Lincolnshire's coast offers classic, traditional English seaside resorts, including Skegness and Cleethorpes, with iconic features including piers, fairgrounds and amusement arcades. In contrast, the area's unspoilt natural coast features miles of wide, empty, quiet beaches; vast skies; and wild nature reserves.

View Creative England's brochure:  
[Lincolnshire's Beaches](#)



### Greater Lincolnshire's market towns

Greater Lincolnshire's market towns are quintessentially English, offering a range of architectural styles from medieval to Georgian and Victorian. Locations include historic churches, town halls, heritage buildings, high streets, market squares and markets, and river- and canal-side views.

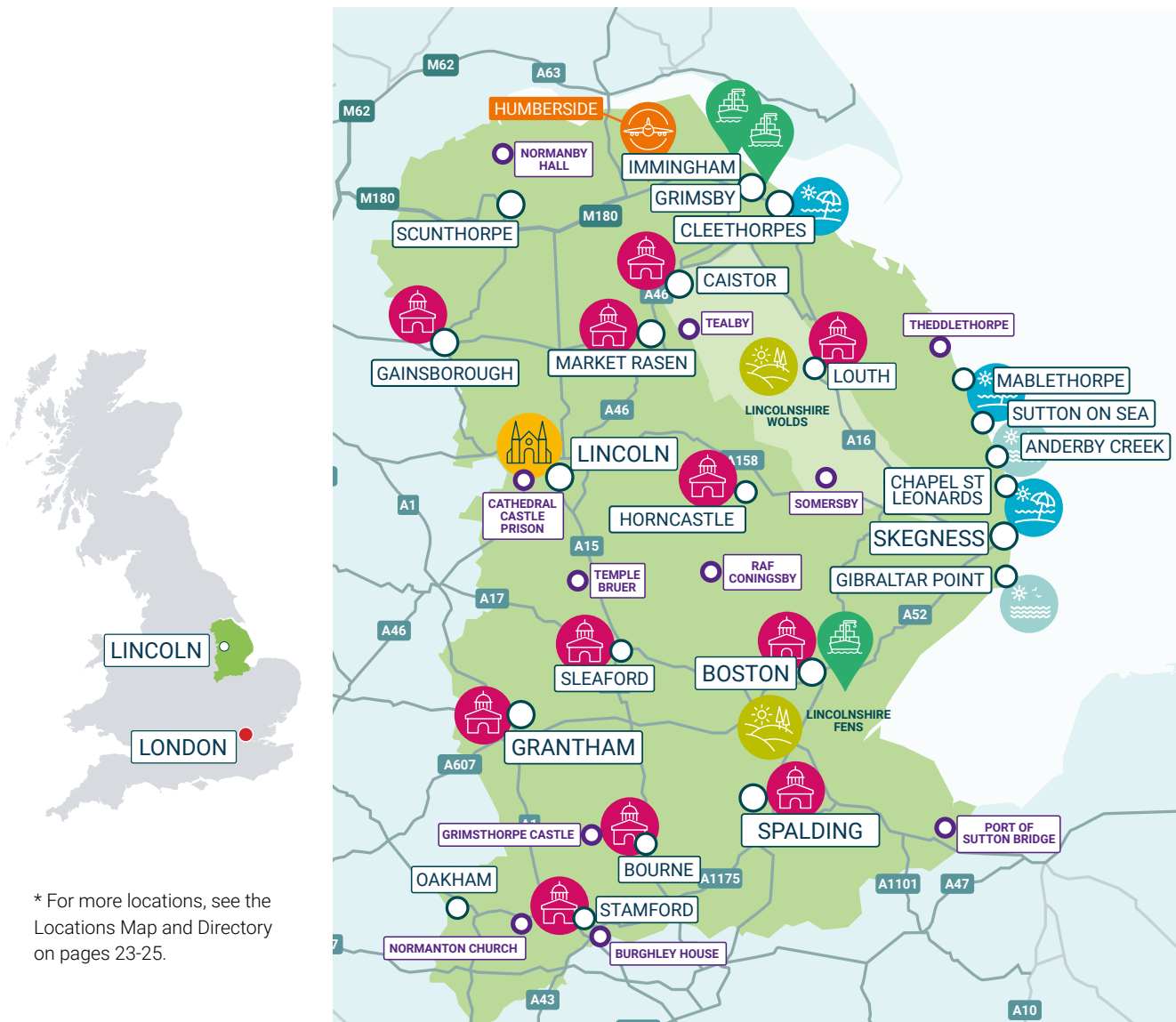


### Greater Lincolnshire's military sites

Greater Lincolnshire's military sites reflect the area's strong RAF heritage. Locations include disused airfields and buildings as well as working bases and military museums.



# Greater Lincolnshire



\* For more locations, see the Locations Map and Directory on pages 23-25.

## Selected Visitor Destinations



City



Countryside



Market Town



Port



Coast (Resort)



Coast (Natural)



Example Locations\*



Airport

# Showcase locations

The following is just a sample of the locations available in Greater Lincolnshire.



## Lincoln Cathedral

With its imposing twin-towered frontage, Lincoln Cathedral has been used as a location double for both Westminster Abbey and Notre Dame. Built in Gothic style with an exceptional vaulted roof, it has cloisters, a chapter house, two libraries and an airman's chapel. The cathedral and the nearby castle are surrounded by historic streets with a variety of heritage buildings.



## Lincoln Castle and Prison

Built in 1068 with a unique double motte, Lincoln Castle is remarkably well preserved. Because of its hilltop position, there are extensive views from the Medieval Walls Walk. The castle has a number of towers, an impressive gate house, and dungeons. Within the walls is a restored Georgian and Victorian prison built in the days of prisoner segregation.







### Mablethorpe

An exemplar of the traditional seaside resort, Mablethorpe has 2 miles of sandy beach, much of it completely unspoiled.

Features include beach huts along a promenade, a fairground, crazy golf, donkeys and seaside shops. It is also home to a Seal Sanctuary and Wildlife Centre.



### Stamford

Stamford is a quaint Georgian (and older) market town with narrow alleys, hidden courtyards, a historic high street and a market square with a busy weekly market. The River Welland winds through the town, offering classically English riverside views. The town has been used as a location for high-profile films and dramas including *The Crown*, *Pride and Prejudice* and *Middlemarch*.



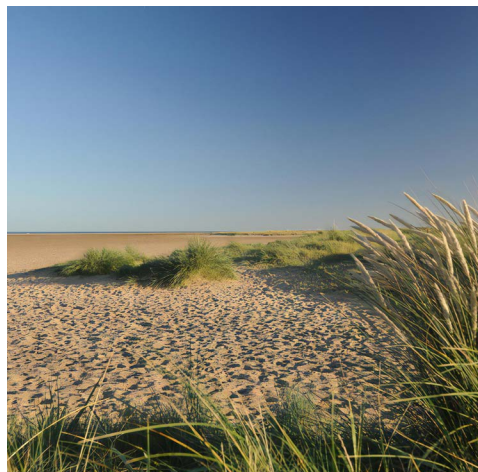
### Normanton Church

When the Rutland Water reservoir was created, Normanton Church was saved from demolition. It is surrounded by water apart from the raised footpath to the shore. The floor level of the church was raised giving the impression that it is sitting in the water.



### **Theddlethorpe**

Theddlethorpe is a small coastal village with historic buildings including St Helen's Church (14th and 15th Century), Theddlethorpe Hall (built in the 17th Century) and a former railway station complete with platform. Some of the coastline is within the Saltfleetby-Theddlethorpe Dunes National Park.



### **Tealby**

Tealby is a quaint village on the edge of the Lincolnshire Wolds. Buildings of note include All Saints Church, built from local orange ironstone, a village hall and school used in the filming of *Nanny* (1980s). The village's two pubs include the Kings Head, which has a thatched roof that dates back to 1367.



### **Grimsthorpe Castle**

Grimsthorpe Castle is a majestic stately home constructed from locally quarried golden limestone. It was the last stately home to be designed by Sir John Vanbrugh, architect of Blenheim Palace and Castle Howard. An interesting mix of Tudor and Baroque styles, the house also has elegant formal gardens and extensive grounds, which are home to wild deer.





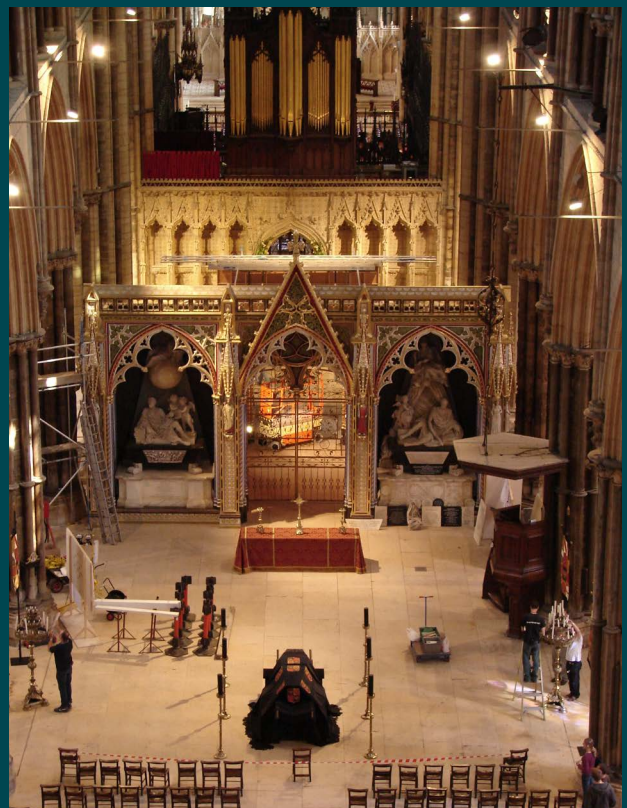
# A proven track record – and untapped potential

---

Greater Lincolnshire has a proven track record of support to HETV, Feature and other levels of production.



Strike: *Troubled Blood*, Skegness. Credit: © Troubled Blood Limited MMXXII



*The Da Vinci Code*, Lincoln Cathedral



*The Crown*, Burghley House

Recent film credits have included:

Production	Year	Location
<b>Napoleon</b>	2022	• <b>Lincoln Cathedral</b> (doubling as Notre Dame)
<b>The Batman</b>	2022	• <b>Burghley House</b>
<b>Wild Bill</b>	2019	• <b>The Fens</b> (various locations)
<b>The King</b>	2019	• <b>Lincoln Cathedral</b> (doubling as Westminster Abbey)
<b>Peterloo</b>	2018	• <b>Lincoln's Cathedral Quarter</b> • <b>Gainsborough Old Hall</b>
<b>The Crown</b>	2016-	• <b>Burghley House</b> (doubling as Windsor Castle) • <b>Stamford</b> (doubling as a Cotswold village)
<b>Rush</b>	2013	• <b>Cadwell Park</b> (doubling as Crystal Palace)
<b>Downton Abbey</b>	2012	• <b>Lincoln Castle Prison</b>
<b>The Young Victoria</b>	2009	• <b>Lincoln Cathedral</b> (doubling as Westminster Abbey) • <b>Belvoir Castle</b>
<b>Atonement</b>	2007	• <b>Grimsby</b> • <b>Spalding</b>
<b>The Da Vinci Code</b>	2006	• <b>Lincoln Cathedral</b> (doubling as Westminster Abbey) • <b>Burghley House</b>
<b>This is England</b>	2006	• <b>Boston</b> • <b>Grimsby</b> • <b>Cleethorpes</b>
<b>Pride &amp; Prejudice</b>	2005	• <b>Burghley House</b> • <b>Stamford</b>
<b>Possession</b>	2002	• <b>Lincoln University</b>

## Novel, Undiscovered Locations

However, with the same popular locations appearing repeatedly in films and dramas, Greater Lincolnshire can also offer novel locations that have never, or only rarely been seen before on screen – providing fresher, more distinctive settings for productions.





*The King*, Lincoln Cathedral



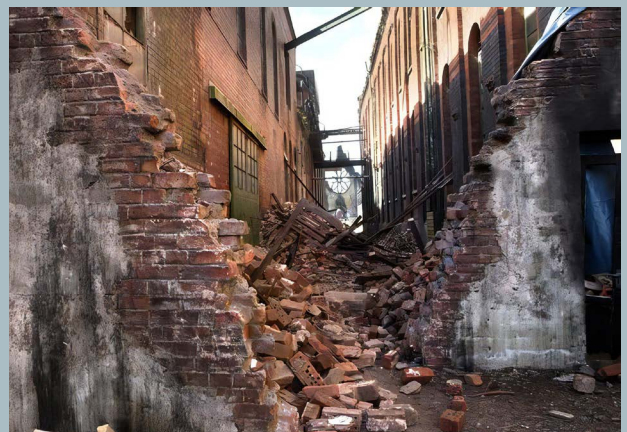
*Peterloo*, Lincoln



*Pride and Prejudice*, Stamford



*Queen Charlotte*, Belton House



*Atonement*, Grimsby





Strike: Troubled Blood, Skegness. Credit: © Troubled Blood Limited MMXXII



The Crown, Burghley House



# Available, low-cost space and storage

**In Greater Lincolnshire, production companies can find available, low-cost space for uses including equipment storage and parking multiple large vehicles – enabling more efficient and profitable productions.**

Cost effective storage and parking are key requirements for film productions on location. And in Greater Lincolnshire, rental costs for commercial land and properties are lower than in other popular UK locations, including Norfolk, Suffolk, Cambridgeshire, Devon and Dorset.<sup>1,2</sup>

While much of the region is agricultural, a variety of land and property solutions are available for cost-effective parking and storage, including brownfield sites, ex-RAF airfields, and industrial units.

Lincolnshire County Council is an agricultural landowner in its own right and welcomes enquiries from production companies. Where other locations are required, the Film Location Team benefits from extensive regional networks, including local land agents and estate agents, and can help companies to source suitable space and premises.



Source: (1) Data from national and regional property agents (Colliers and Banks Long & Co) show lower commercial property rents and land values in Lincolnshire than in key competitor locations in the East Midlands, West Midlands, East, South East and South West regions; (2) Farmers Weekly 'price per acre by county' shows lower prices per acre in Lincolnshire than in competitor locations.

# Low-cost accommodation and catering services

**Greater Lincolnshire can deliver substantial savings in areas including accommodation – a significant cost element for film productions.**

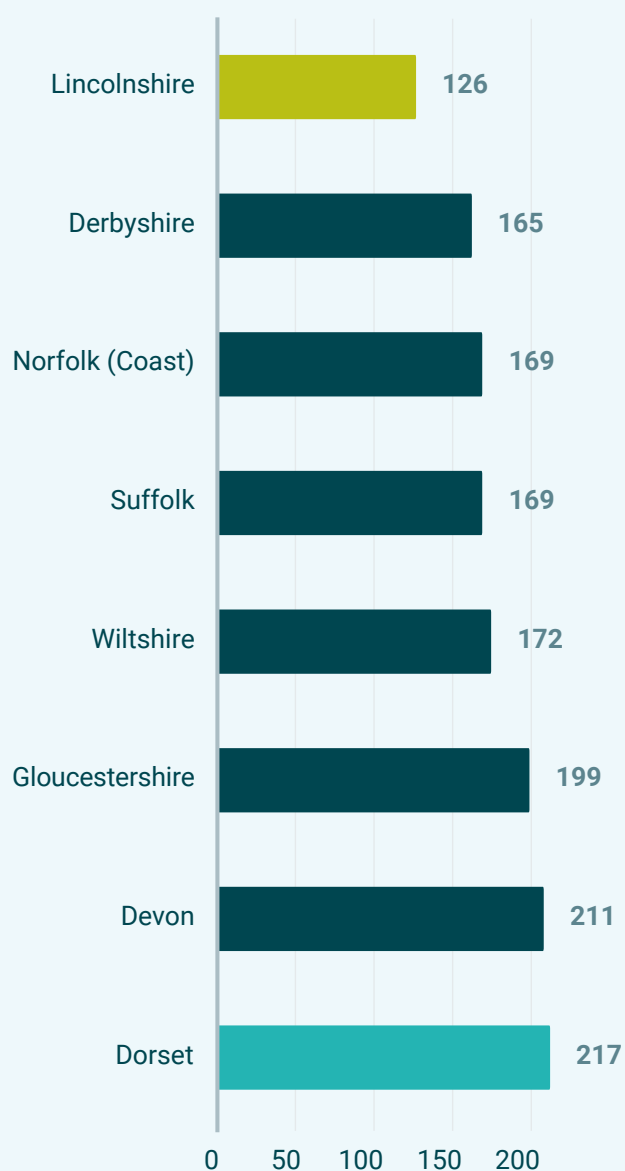
Because levels of demand for short-stay accommodation are lower in Greater Lincolnshire than in many of the UK's most popular regions for film production, substantial savings can be achieved on accommodation costs.

In 2022, Lincolnshire was ranked 49th out of 50 UK locations (i.e. second lowest) for the cost of short-stay accommodation (average price per night). Peak season prices in Lincolnshire were 24% lower than Derbyshire, 25% lower than Norfolk (coast) and Suffolk, 37% lower than Gloucestershire, 40% lower than Devon, and 42% lower than Dorset.<sup>3</sup>

As an overall lower cost location, production companies are also likely to benefit from significant savings on catering and other operational costs.

To ensure best possible value, the Film Lincolnshire team can help productions companies to negotiate favourable rates for accommodation, catering and other local services.

Accommodation Costs (2022 High Season)



Source: (3) [holidu.co.uk/magazine/holidu-summer-price-index-2022](https://www.holidu.co.uk/magazine/holidu-summer-price-index-2022).

Avg. price per night (£)



# Responsive road control and closures

**Greater Lincolnshire's authorities are committed to fast and efficient responses to road control and closure requests.**

The Film Lincolnshire team and Greater Lincolnshire's local authority highways teams are ready to assist production companies with advice and access arrangements. To support the industry, the lead time for expediting road closure permits has been reduced exclusively for filming projects, focused on a range of roads identified as cinematic (including coastal, rural, period and inner city).

Temporary traffic restrictions or parking suspensions are also expedited with shorter lead times than in many other areas, and our highways teams will be pleased to discuss the process with you. Greater Lincolnshire's councils often help production companies find alternative solutions to avoid the need for formal traffic orders, providing the flexibility that crews require while maintaining access for residents and visitors.

In cases where production companies wish to film in Lincolnshire's public spaces but will not require traffic restrictions or cause an obstruction, permits are not required.

**Contact the Film Lincolnshire team to find out more.**

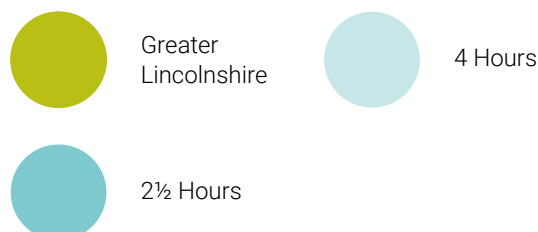


# Proximity to UK production hubs

## Including London, Leeds and Manchester

For companies seeking particular sites or outdoor scene, many of Greater Lincolnshire's locations are within easy commuting distance of the UK's major film hubs – delivering potential time and cost savings.

### Drive Times (to/from Lincoln)



#### By Road

Greater Lincolnshire is accessible within 2½ hours from the major population centres of the Midlands and North of England, and within 2¾ hours from London.<sup>4</sup>



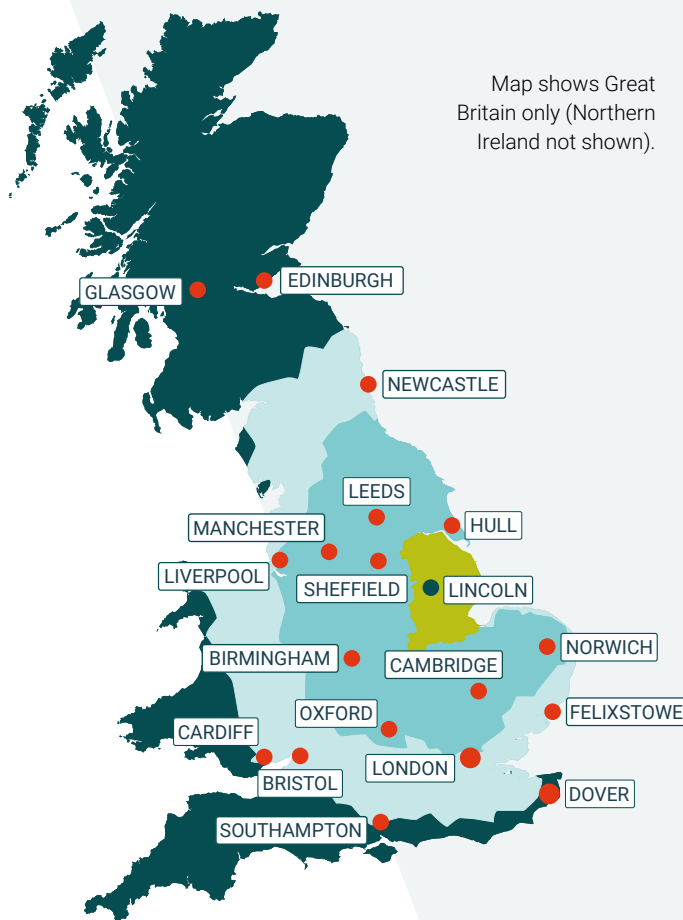
#### By Rail

The region is easily accessible by rail from the UK's major population centres. Lincoln can be reached within 2 hours from London and within 2¼ hours from Manchester. Grantham, in the south of the region, can be reached from London in just over 1 hour.<sup>4</sup>



#### International Air Connectivity

Humberside Airport (HUY) offers frequent 'hub-feeder' services from and to Amsterdam Schiphol (AMS), with connections from 800 global destinations with KLM and SkyTeam partners.<sup>5</sup> Airports accessible within 2 hours' drive time include East Midlands (EMA) and Birmingham (BHX).<sup>4</sup>





# Supportive local universities, colleges and creative industries

Greater Lincolnshire is home to universities, colleges and creative industry companies with solid film and drama credentials – providing a source of local talent, and potential cost and time savings, for production companies seeking extra actors and crew.

## Greater Lincolnshire's Universities

### Lincoln School of Film, Media and Journalism

(University of Lincoln) equips its students for work in the commercial sector and benefits from strong relationships with the region's creative industries. Industry standard, purpose-built facilities include TV and radio studios, high-quality digital editing and finishing software, post-production facilities, and a 4K screening room and screening theatre. Courses include film production, sound and music production, animation and visual effects, and drama and theatre.<sup>6</sup>

**Bishop Grosseteste University**, also located in Lincoln, delivers degree and post-graduate courses in subjects including drama, music and business.<sup>7</sup>

**Greater Lincolnshire's further and higher education colleges** also offer relevant courses. They include Franklin Sixth Form College in Grimsby, which runs courses in Media Production and Creative Media, and Lincoln College, which offers a Media and Journalism course.<sup>8,9</sup>

**Greater Lincolnshire's thriving creative sector** includes Lincoln Performing Arts Centre, involved in creative projects across the region, and a £3 million project to convert the old Barbican Hotel in Lincoln into a creative hub, including studios and working spaces.

Source: (6) [lincoln.ac.uk](http://lincoln.ac.uk) (7) [bgu.ac.uk](http://bgu.ac.uk) (8) [franklin.ac.uk](http://franklin.ac.uk) (9) [lincolncollege.ac.uk](http://lincolncollege.ac.uk)



# A region committed to sustainability

**Greater Lincolnshire's local authorities have developed, and are committed to delivering, clear sustainability strategies – with the potential to help production companies achieve their own sustainability goals.**

Sustainability is an increasingly important consideration across all sectors, including film production, and partnering with a sustainability-focused region can help companies demonstrate their own credentials.

Lincolnshire County Council is working hard to promote and encourage sustainability across the county. The council's Green Masterplan<sup>10</sup> includes firm commitments to reduce waste, maximise energy efficiency, and encourage low carbon and active forms of transport wherever possible.

Lincolnshire's Transport Plan is an important part of this work. The plan specifies significant investments to improve cycle and walking routes, provide extra rail services to London, develop additional electric vehicle infrastructure, and improve local bus services.<sup>11</sup>

Some locations and venues in Greater Lincolnshire offer sustainability benefits including electric vehicle charging points, and the region is home to sustainable events companies. More information is available from the Film [Lincolnshire team](#).

Source: (10) [lincolnshire.gov.uk/green-masterplan/green-masterplan-actions](https://lincolnshire.gov.uk/green-masterplan/green-masterplan-actions); (11) [lincolnshire.gov.uk/downloads/file/7200/local-transport-plan-5](https://lincolnshire.gov.uk/downloads/file/7200/local-transport-plan-5).



# Dedicated support from the Film Lincolnshire team

---

**The Film Lincolnshire team provides a single, responsive point of contact for production companies, making it straightforward to find locations, negotiate permissions and permits, and access a range of local services.**

The team offers detailed knowledge of the region and excellent networks across all sectors. They are experienced in supporting companies to identify suitable locations, negotiate permissions, expedite permits for road closure, identify suitable space for storage and parking, and negotiate accommodation and catering for cast and crew.

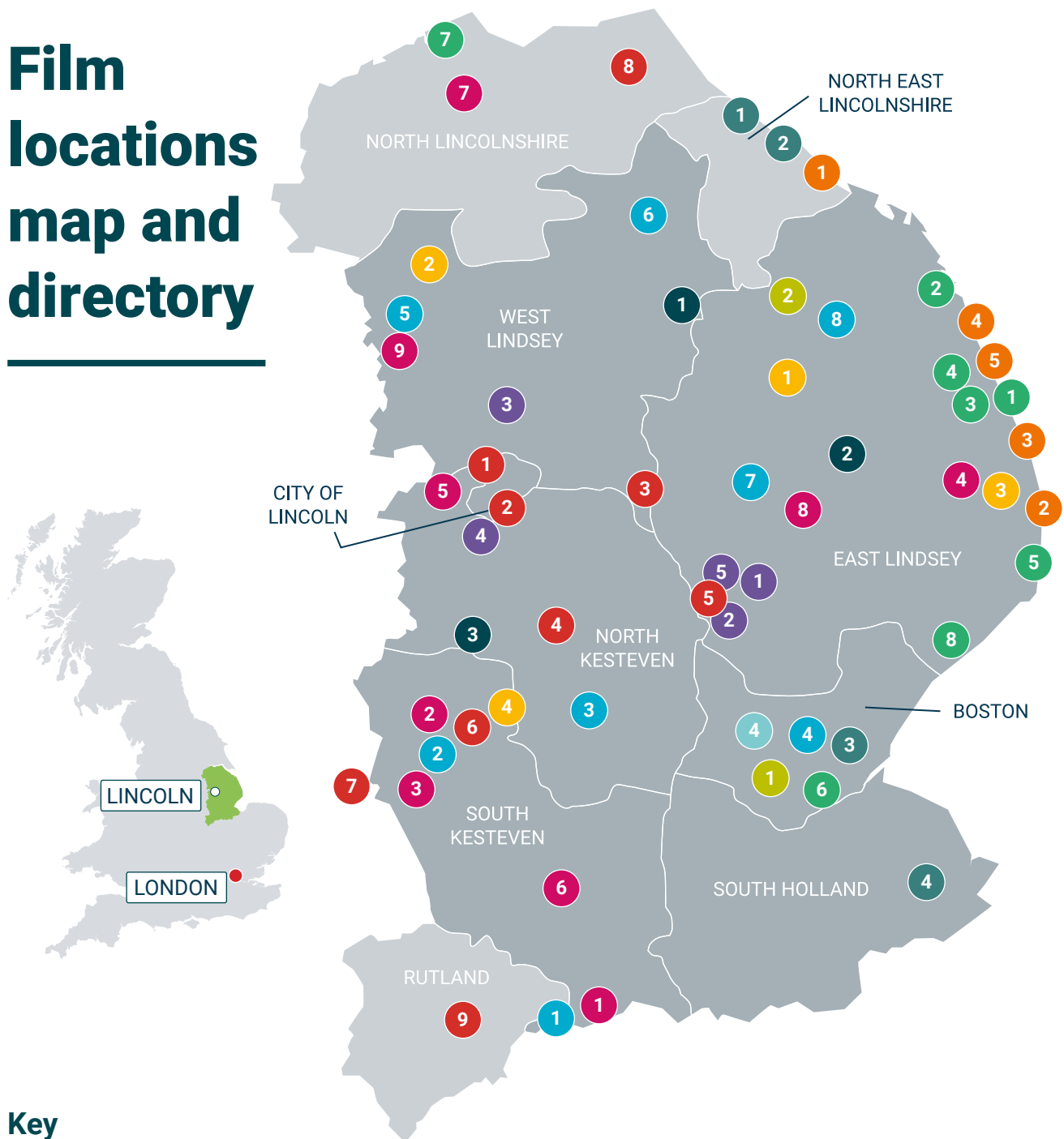
The Film Lincolnshire team also benefits from close relationships with councils, other landowners, and agents. This means they can work with location scouts and production companies to identify the fastest routes to securing necessary permissions for filming.

The team is continually working to create the best possible environment for production companies, and our film production-friendly councils are committed to expediting requests wherever possible.

As a Filming in England Partner, Visit Lincolnshire (part of Lincolnshire County Council) is fully committed to making the region an attractive and welcoming place for production companies.



# Film locations map and directory



## Key

- |  |  |   |
|--|--|---|
| <span style="color: red;">●</span> <b>Category A:</b> Heritage City & Other Historic Sites | <span style="color: lightblue;">●</span> <b>Category E:</b> Countryside – Market Towns     | <span style="color: purple;">●</span> <b>Category I:</b> Military History |
| <span style="color: orange;">●</span> <b>Category B:</b> Coastal – Towns & Resorts         | <span style="color: darkteal;">●</span> <b>Category F:</b> Countryside – Villages          | <span style="color: yellow;">●</span> <b>Category J:</b> Racing Circuits  |
| <span style="color: green;">●</span> <b>Category C:</b> Coastal – Natural Coast            | <span style="color: pink;">●</span> <b>Category G:</b> Countryside – Stately Homes         | <span style="color: lightteal;">●</span> <b>Category K:</b> Waterways     |
| <span style="color: darkteal;">●</span> <b>Category D:</b> Ports                           | <span style="color: limegreen;">●</span> <b>Category H:</b> Countryside – Open Countryside |   |



## Directory

#	Location	Description	Postcode (Sat Nav)
<b>Category A: Heritage City &amp; Other Historic Sites</b>			
1	Lincoln Cathedral	Cathedral with twin towers	LN2 1PL
2	Lincoln Castle and Prison	Well-preserved castle and Victorian prison	LN1 3AA
3	Bardney Abbey	Ruins of Benedictine monastery	LN3 5XD
4	Temple Bruer	Knights Templar preceptory tower	LN5 0DG
5	Tattershall Castle	C15th red brick castle	LN4 4LR
6	Bellmount Tower	Tower with dining area and views	NG32 2LW
7	Belvoir Castle	Stately home in castle style	NG32 1PA
8	Thornton Abbey Gatehouse	Augustinian ornate gatehouse	DN39 6TU
9	Normanton Church	Located on an island in Rutland Water	LE15 8RP
<b>Category B: Coastal – Towns &amp; Resorts</b>			
1	Cleethorpes	Large resort with iconic pleasure pier	DN35
2	Skegness	Large resort with entertainment on the pier	PE25
3	Chapel St Leonards	Village with promenade and beach	PE24
4	Mablethorpe	Traditional seaside beach & seal sanctuary	LN12
5	Sutton on Sea	Traditional seaside promenade and beach	LN12
<b>Category C: Coastal – Natural Coast</b>			
1	Anderby Creek	Sandy beach with dunes	PE24
2	Theddlethorpe	Salt marshland and sandy beach	LN12
3	Huttoft	Quiet rural beach	LN13
4	Sandilands	Very long sandy beach	LN12
5	Gibraltar Point	Unspoilt coastline and nature reserve	PE24
6	Frampton Marsh	Nature reserve – reed beds and coast	PE20 1AY
7	Alkborough Flats	Floodplain where two rivers enter the sea	DN15 9JF
8	Friskney Flats	Open low-lying landscape (fens)	PE22
<b>Category D: Ports</b>			
1	Immingham	Largest port in UK by tonnage	DN40 2LZ
2	Grimsby	Busy working port – some heritage buildings	DN31 3LL
3	Port of Boston	Inland working port	PE21 6BN
4	Port of Sutton Bridge	Port closed in 2022 – historic bridge	PE12 9QR
<b>Category E: Countryside – Market Towns</b>			
1	Stamford	Quaint Georgian (and older) town	PE9
2	Grantham	Ancient town – close to stately homes	NG31
3	Sleaford	Historic town with river and canal	NG34
4	Boston	Historic town – notable churches	PE21

#	Location	Description	Postcode (Sat Nav)
5	Gainsborough	Large town on river – medieval history	DN21
6	Caistor	Market town with Roman heritage	LN7
7	Horncastle	Town - section of Roman walls	LN9
8	Louth	Georgian and Victorian town	LN11
<b>Category F: Countryside – Villages</b>			
1	Tealby	Classic picturesque English village with ford	LN8
2	Somersby	Ancient church and manor – home of Tennyson	PE23
3	Brant Broughton	Wide street – coaching stop in C18th & C19th	LN5
<b>Category G: Countryside – Stately Homes</b>			
1	Burghley House	Grand C16th house, gardens and landscape	PE9 3JY
2	Belton House	Carolean C17th house, beautiful gardens	NG32 2LS
3	Harlaxton Manor	Ornate 1830s manor with formal gardens	NG32 1AG
4	Gunby Hall	C18th country house, Victorian walled gardens	PE23 5SS
5	Doddington Hall	Elizabethan manor, tapestries and gardens	LN6 4RU
6	Grimsthorpe Castle	By architect of Blenheim & Castle Howard	PE10 0LY
7	Normanby Hall	Regency manor in 300 acres	DN15 9HU
8	Revesby Abbey	C19th manor in Jacobean style – under repair	PE22 7NX
9	Gainsborough Old Hall	Large well-preserved Elizabethan manor	DN21 2NB
<b>Category H: Countryside – Open Countryside</b>			
1	Fens	Wetland – wildlife and windmills	–
2	Wolds	Unspoiled AONB – rolling hills open landscape	–
<b>Category I: Military History</b>			
1	Ostler's Plantation	Woodland with hidden WW2 bunkers	LN10 6YY
2	RAF Coningsby	Battle of Britain Memorial Flight visitor centre	LN4 4TG
3	RAF Scampton	Closed in 2022, plans to develop	LN1 2ST
4	RAF Waddington	Heritage centre – history of RAF from 1916	LN5 9NB
5	RAF Woodhall Spa	Thorpe Camp Visitor Centre	LN4 4PG
<b>Category J: Racing Circuits</b>			
1	Cadwell Park	Motor racing circuit in Wolds countryside	LN11 9SE
2	Blyton Park	Motor racing circuit in flat, open countryside	DN21 3PE
3	Skegness Raceway	Oval racing circuit for stock car racing etc.	PE24 5JA
4	Ancaster Kart Racing Circuit	Go kart racing circuit	NG32 3PY
<b>Category K: Waterways (* not shown on map)</b>			
1	River Witham*	River. Landscape includes flat countryside	–
2	River Trent*	Major river with varied landscapes	–
3	River Ancholme*	River. Leisure use. Some flat countryside	–
4	South Forty Foot Drain	Land-drainage channel, Lincolnshire Fens	–



# Support for your film production in Greater Lincolnshire

The Film Lincolnshire team, part of Lincolnshire County Council, is a one-stop, 'single point of contact' for all film scouting or production enquiries. We provide dedicated support for film production companies in areas including:

- Identifying suitable locations
- Securing permissions from landowners and agents
- Identifying and securing suitable space for production, parking and storage
- Identifying and negotiating accommodation, catering and other support services
- Expediting road closure permits
- Providing access to extensive regional knowledge, contacts and networks

creative  
england

## Filming in England Partner

### A Filming in England Partner Organisation

Visit Lincolnshire is a member of Creative England's Filming in England Partnership.

The Partnership helps to create a film-friendly environment for film and TV productions by building connections between supporting organisations including local authorities, locations, facilities, studios and national bodies.

**We look forward to being of assistance.**

## Contact the Film Lincolnshire Team

Please contact:

Jade Elkington,  
Project Officer – Visitor Economy  
e: [filming@lincolnshire.gov.uk](mailto:filming@lincolnshire.gov.uk)

[www.visitlincolnshire.com](http://www.visitlincolnshire.com)

Address:

The Film Lincolnshire Team  
Lincolnshire County Council  
Lancaster House  
36 Orchard Street  
Lincoln, LN1 1XX









served by One Team

